

SQ 3- 65 1.05kW 200-240V
Grundfos pump 96510207




Thank you for your interest in our products. Please contact us for more information, or visit our website

<https://www.lenntech.com/grundfos/SQC03/96510207/SQ-3-65.html>

info@lenntech.com

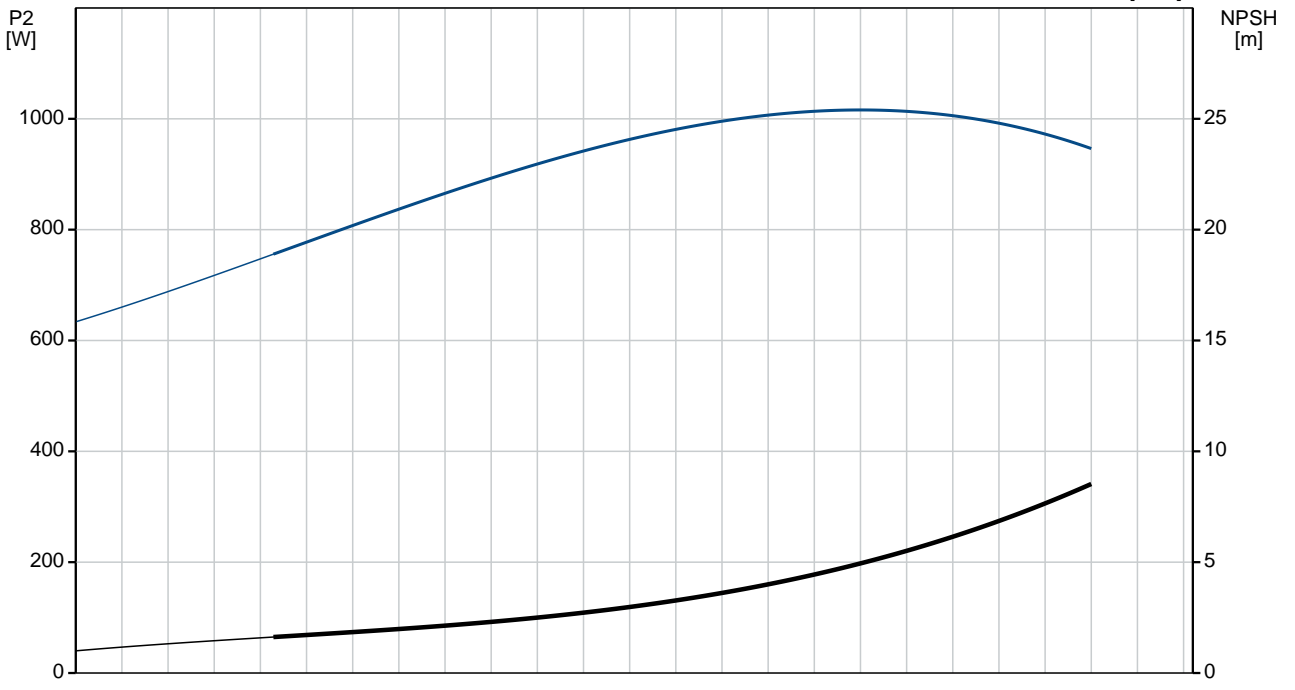
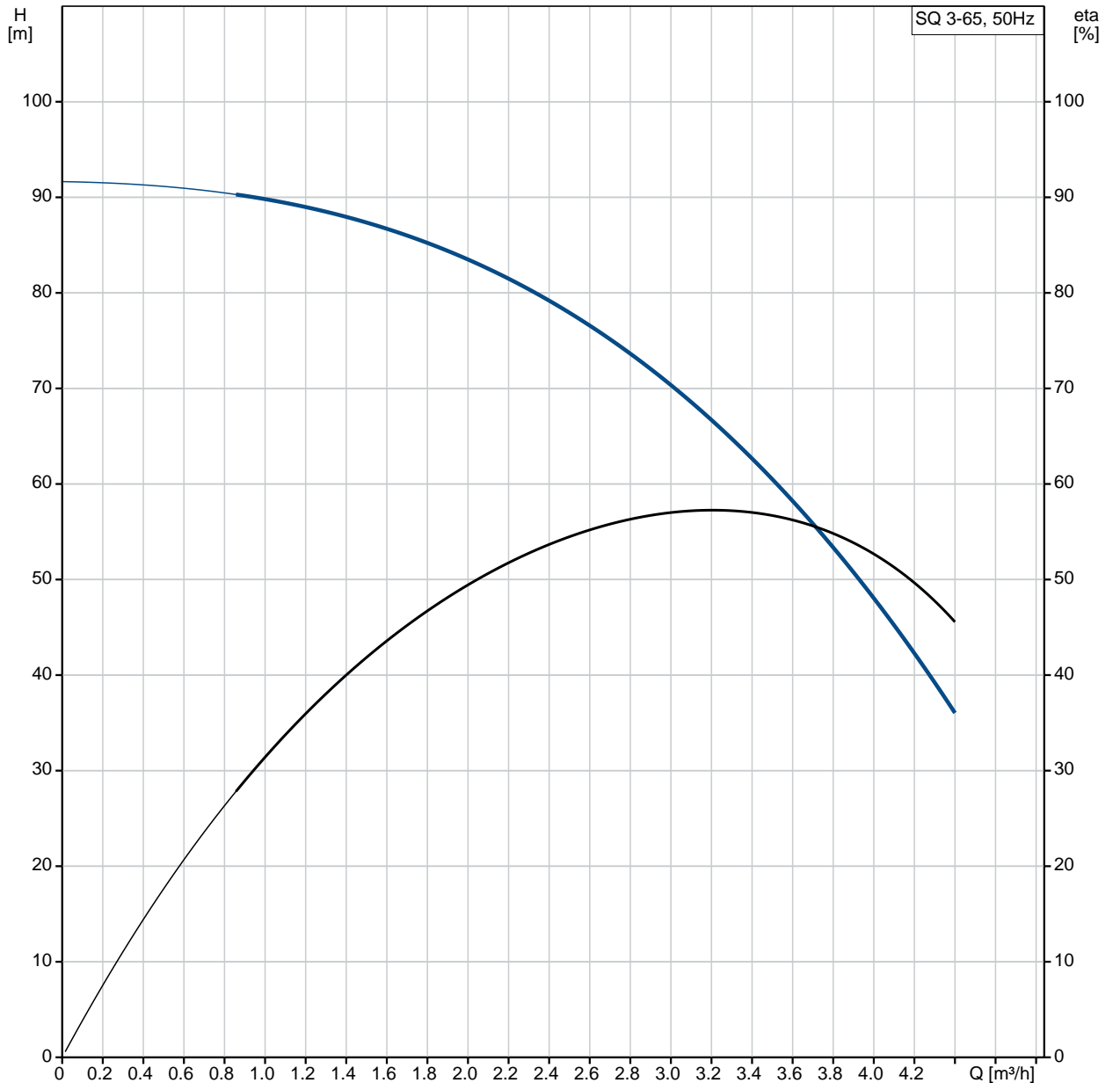
tel. +31 152 610 900

fax. +31 152 616 289

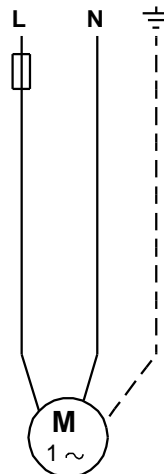
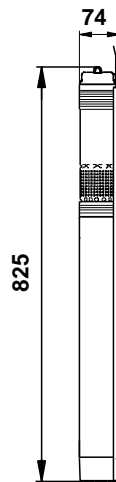
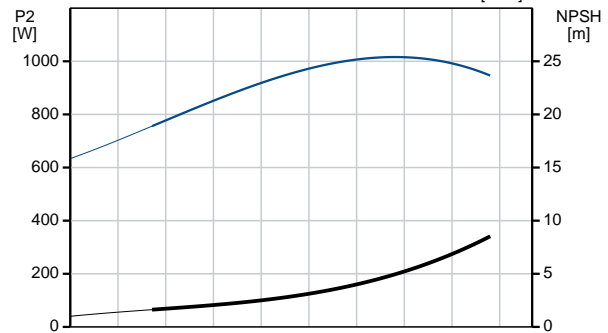
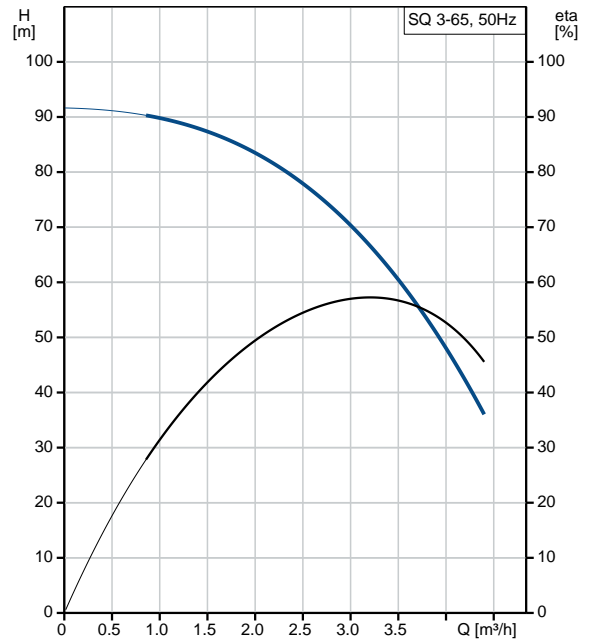
Position	Qty.	Description
	1	<p data-bbox="322 163 414 194">SQ 3-65</p>  <p data-bbox="711 660 1193 685">Note! Product picture may differ from actual product</p> <p data-bbox="322 692 600 719">Product No.: On request</p> <p data-bbox="322 721 1449 797">3" multi-stage, submersible pump designed for domestic water supply, liquid transfer in tanks, irrigation and environmental applications. The pump has "floating" impellers, each with its own tungsten carbide/ceramic bearing.</p> <p data-bbox="322 837 1455 889">The pump features soft starting and protection against dry-running, upthrust, overvoltage, undervoltage, overload and overtemperature.</p> <p data-bbox="322 925 1406 976">The motor is a single-phase motor of the permanent magnet rotor type ensuring optimum efficiency within a wide load range.</p> <p data-bbox="322 981 976 1008">The motor is fitted with a replaceable end cover with socket.</p> <p data-bbox="322 1043 405 1070">Liquid:</p> <p data-bbox="322 1072 817 1218">Pumped liquid: Water Maximum liquid temperature: 35 °C Max liquid t at 0.15 m/sec: 35 °C Liquid temperature during operation: 20 °C Density: 998.2 kg/m³</p> <p data-bbox="322 1249 443 1276">Technical:</p> <p data-bbox="322 1279 880 1397">Rated flow: 3 m³/h Rated head: 70 m Approvals on motor nameplate: CE,UL,CUL Curve tolerance: ISO9906:2012 3B</p> <p data-bbox="322 1429 437 1456">Materials:</p> <p data-bbox="322 1458 979 1664">Pump: Polyamide / Stainless steel DIN W.-Nr. 1.4301 AISI 304 Impeller: Polyamide Motor: Stainless steel DIN W.-Nr. 1.4301 AISI 304</p> <p data-bbox="322 1695 459 1722">Installation:</p> <p data-bbox="322 1724 778 1783">Pump outlet: Rp 1 1/4 Minimum borehole diameter: 76 mm</p> <p data-bbox="322 1814 497 1841">Electrical data:</p> <p data-bbox="322 1843 839 2107">Motor type: MS3 Power input - P1: 1.65 kW Rated power - P2: 1.15 kW Mains frequency: 50 Hz Rated voltage: 1 x 200-240 V Rated current: 8.4 A Power factor: 1.00 Rated speed: 10700 rpm Start. method: direct-on-line</p>

Position	Qty.	Description
		<p>Enclosure class (IEC 34-5): IP68 Insulation class (IEC 85): F Length of cable: 1.5 m</p> <p>Others: Net weight: 6.6 kg Gross weight: 5.8 kg Shipping volume: 0.01 m³ Danish VVS No.: 388433465</p>

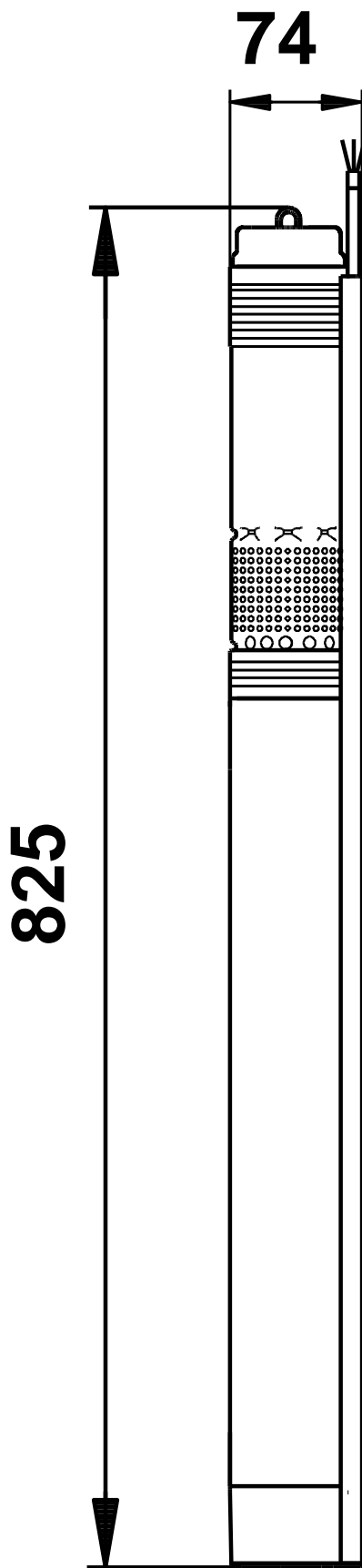
On request SQ 3-65 50 Hz



Description	Value
General information:	
Product name:	SQ 3-65
Product No:	On request
EAN number:	On request
Technical:	
Rated flow:	3 m ³ /h
Rated head:	70 m
Stages:	5
Approvals on motor nameplate:	CE,UL,CUL
Curve tolerance:	ISO9906:2012 3B
Pump No:	96080397
Model:	B
Valve:	pump with built-in non-return valve
Materials:	
Pump:	Polyamide / Stainless steel DIN W.-Nr. 1.4301 AISI 304
Impeller:	Polyamide
Motor:	Stainless steel DIN W.-Nr. 1.4301 AISI 304
Installation:	
Pump outlet:	Rp 1 1/4
Minimum borehole diameter:	76 mm
Liquid:	
Pumped liquid:	Water
Maximum liquid temperature:	35 °C
Max liquid t at 0.15 m/sec:	35 °C
Liquid temperature during operation:	20 °C
Density:	998.2 kg/m ³
Electrical data:	
Motor type:	MS3
Power input - P1:	1.65 kW
Rated power - P2:	1.15 kW
Mains frequency:	50 Hz
Rated voltage:	1 x 200-240 V
Rated current:	8.4 A
Power factor:	1.00
Rated speed:	10700 rpm
Start. method:	direct-on-line
Enclosure class (IEC 34-5):	IP68
Insulation class (IEC 85):	F
Motor protec:	Y
Thermal protec:	internal
Length of cable:	1.5 m
Motor No:	96160851
Controls:	
CU 300/CU 301:	no communication possible
Others:	
Net weight:	6.6 kg
Gross weight:	5.8 kg
Shipping volume:	0.01 m ³
Sales region:	EU/S-AMREG/APREG
Danish VVS No.:	388433465

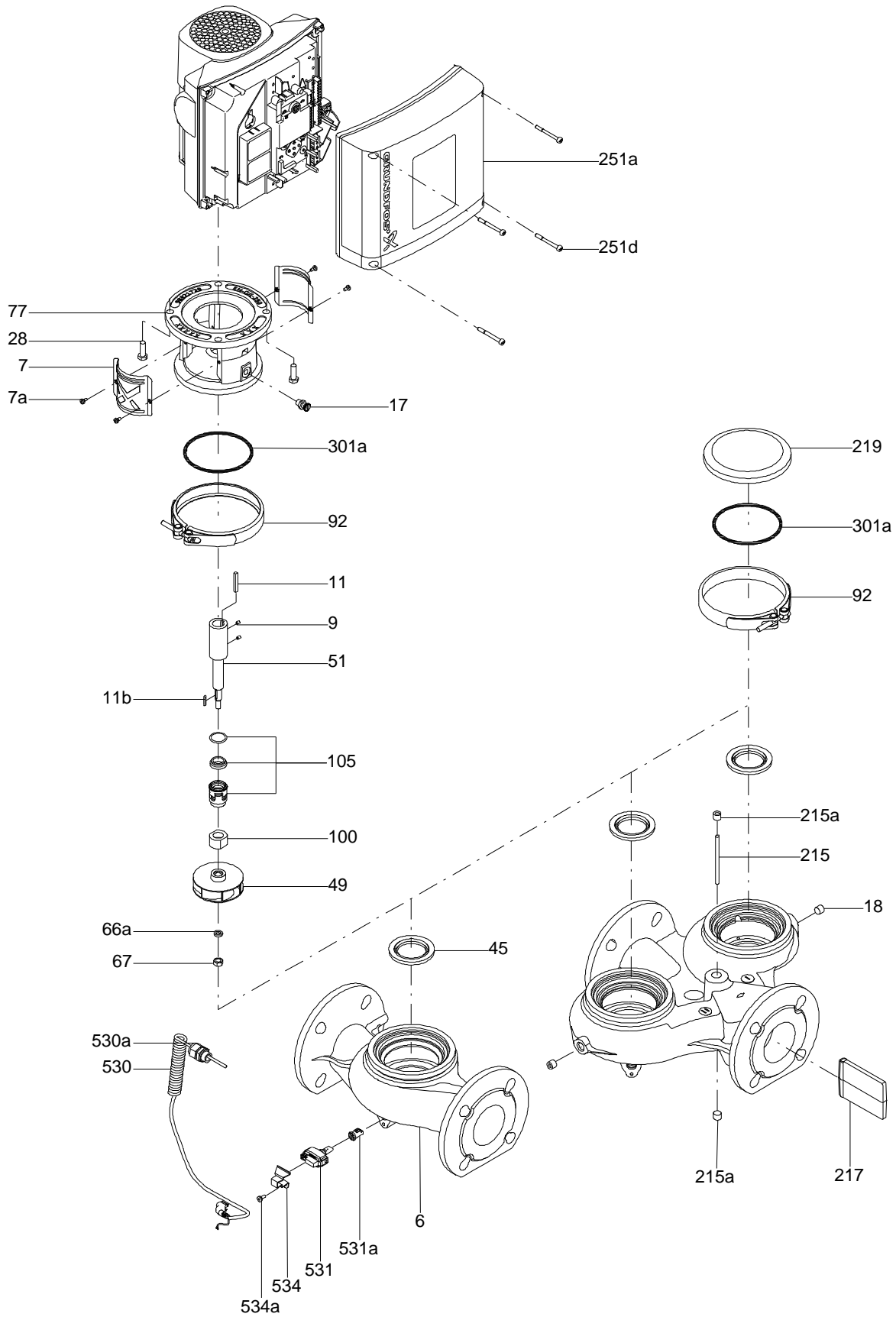


On request SQ 3-65 50 Hz

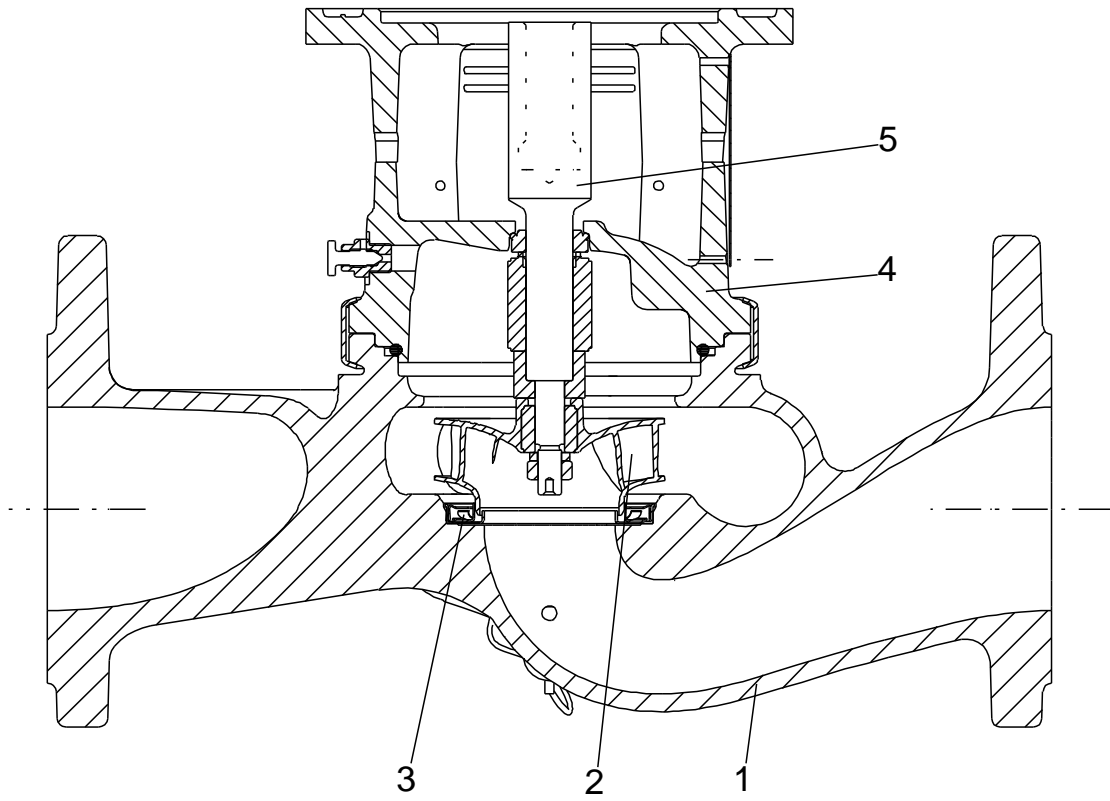


Note! All units are in [mm] unless others are stated.
Disclaimer: This simplified dimensional drawing does not show all details.

Exploded view

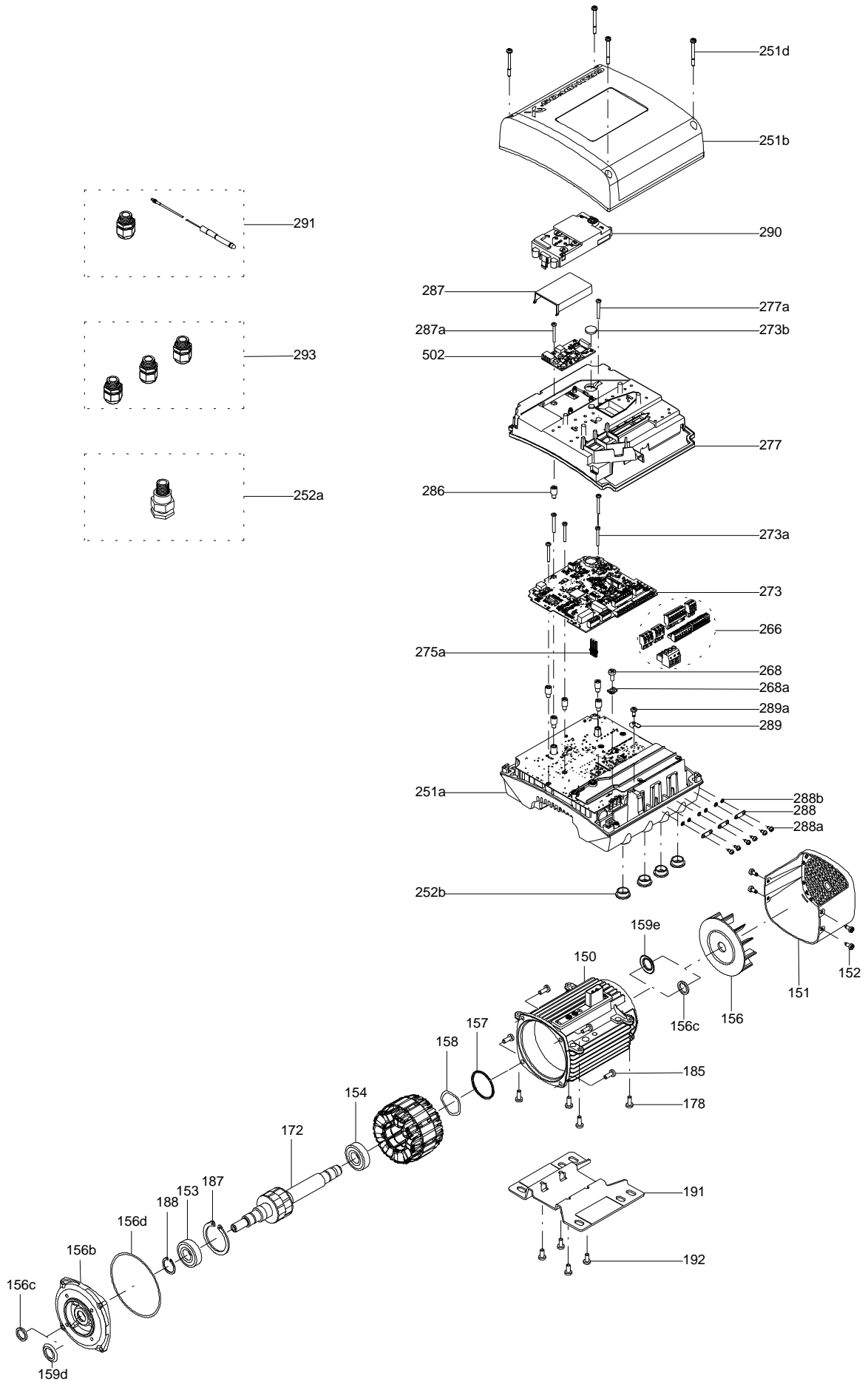


Sectional drawing (TM058200 for TPE2,TPE3)



TM058200

Exploded view (TM057026 for MGE model H/I)



Parts list SQ 3-65, Product No. On request
Valid from 3.12.2012 (1249)

Pos	Description	Annotation	Données de classification	Référence	Quantité	Unité
-	Pump w/o motor				1	pcs
1a	Discharge chamber		Thread: RP 1 1/4"		1	
16	Shaft cpl.		Length (mm): 205,6		1	
55	Pump sleeve				1	
-	Motor				1	pcs
	Motor liquid				0	
220	Power cable				1	
- 250	Screw				4	
18a	Pan head tapping screw				2	
250	Pan head screw				4	
- 250	Screw				1	
18a	Pan head tapping screw				2	
250	Pan head screw				4	
18	Rail for cable guard				1	pcs
18a	Pan head tapping screw				2	pcs

Disclaimer: The information about the Grundfos pump in this document may be outdated.

Data may be subject to alterations without further notice.

Please contact us to verify the data above is still accurate/up-to-date.

All information is copyright Grundfos.



info@lenntech.com

<https://www.lenntech.com>

tel. +31 152 610 900

fax. +31 152 616 289