

MyFox

Bath thermostat for exposed installation

Finish: **Chrome** Article Number: **13154000**



Description

product features

- projection 182 mm
- 2 functions
- spray type mixer: normal spray
- maximum flow rate at 3 bar: 20 l/min
- thermostat cartridge, shut-off valve
- safety stop at 40 °C
- temperature limitation adjustable
- non-return valve
- with automatic resetting
- with silencer
- material handles: metal
- connection type: s-shaped connections
- connection dimension: DN15
- wall-mounted
- min. operating pressure: 1 bar
- max. operating pressure: 10 bar
- centre distance: 150 ± 12 mm
- dirt filter included
- EPD Thermostats

Technology



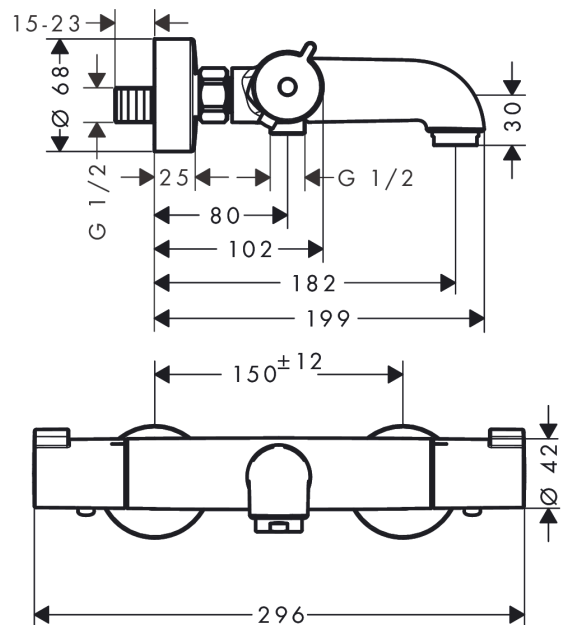
Certificates / Sustainability



Product image



Scale drawing



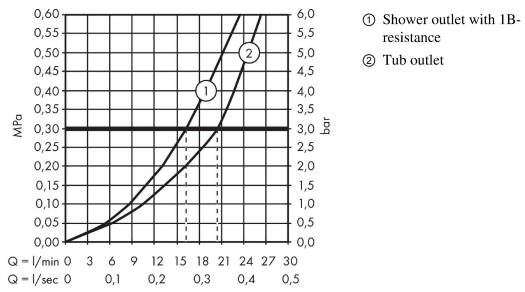
MyFox

Bath thermostat for exposed installation

Finish: **Chrome** Article Number: **13154000**



Flowchart



MyFox

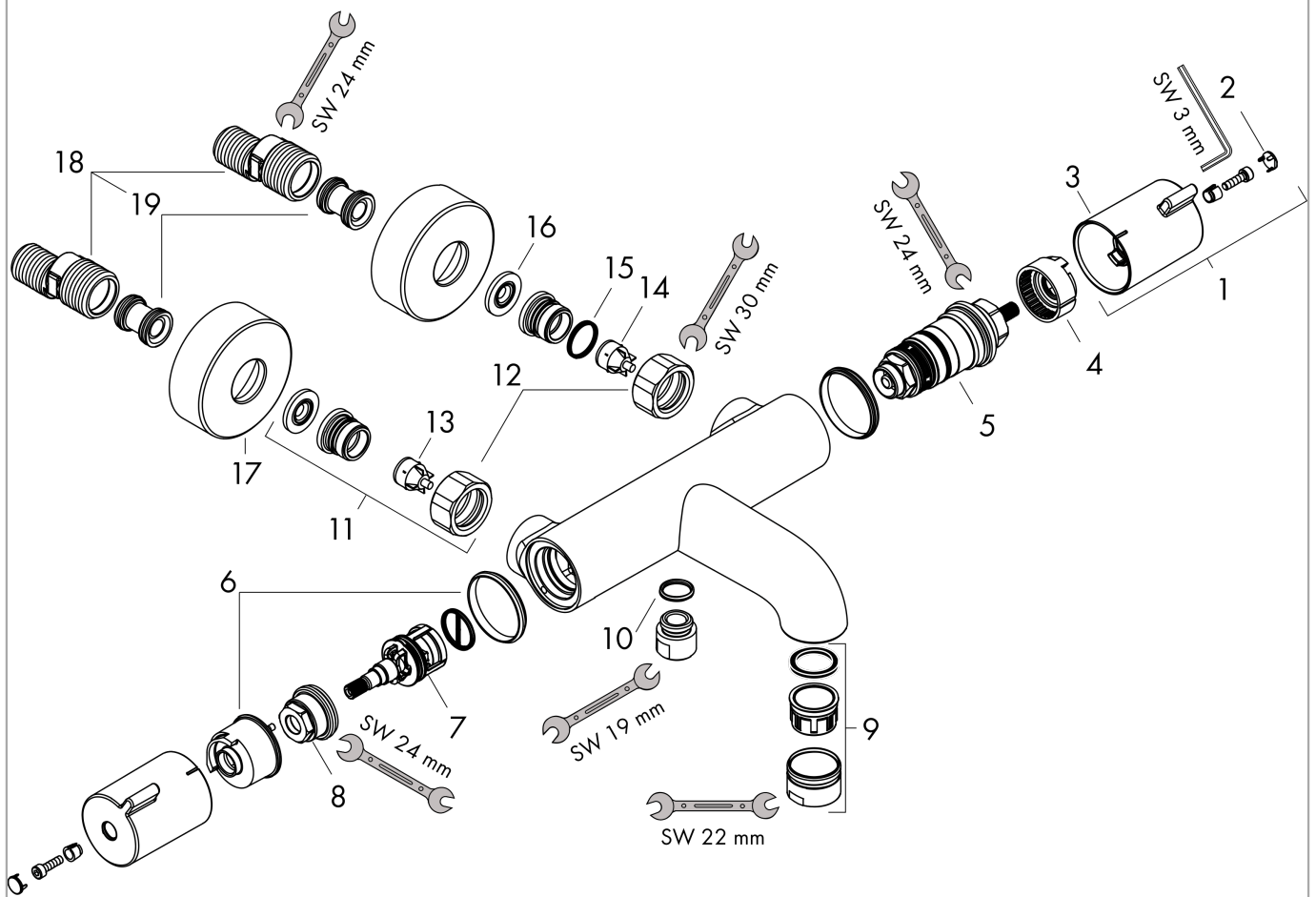
Bath thermostat for exposed installation

Finish: **Chrome** Article Number: **13154000**



Exploded Drawing

Year of production: >09/19



MyFox**Bath thermostat for exposed installation**Finish: **Chrome** Article Number: **13154000****Spare part list**

Year of production: >09/19

Pos.	Description	Article Number	Price	PU
1	handle	92836000	€ 36,89	1
2	cover cap	95433000	€ 5,36	1
3	pushbutton	92848000	€ 5,36	1
4	safety set for temperature control	95041000	€ 14,28	1
5	thermostat cartridge	94282000	€ 128,28	1
6	stop ring for flow control	98674000	€ 8,69	1
7	shut off unit with selector	96509000	€ 88,54	1
8	nut	92853000	€ 8,69	1
9	aerator M24x1 (25 l/min)	92511000	€ 11,66	1
10	O-ring 14x2	98129000	€ 3,33	1
11	set of unions	94285000	-	1
12	set of nuts	96157000	€ 28,92	1
13	non return valve (pressure-resistant up to 2 MPa)	93136000	€ 28,92	1
14	non return valve	96737000	€ 28,92	1
15	O-ring 17x1,5	98137000	€ 3,33	1
16	filter packing	96922000	€ 8,69	1
17	escutcheon Ø 68 mm	96467000	€ 18,80	1
18	set of S-unions (±12 mm)	94140000	€ 45,82	1
19	noise reduction	96429000	€ 5,36	1