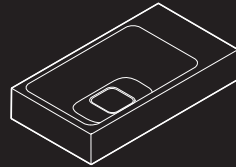
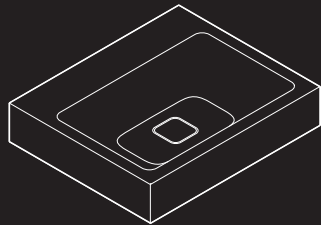
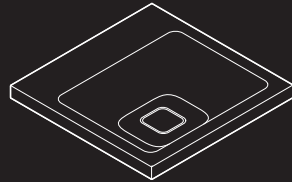
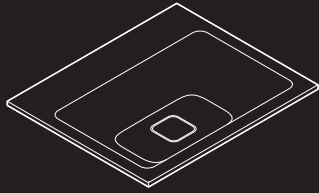
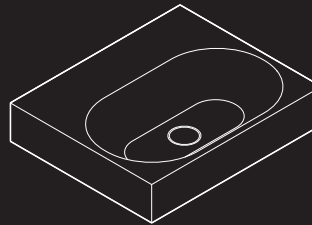
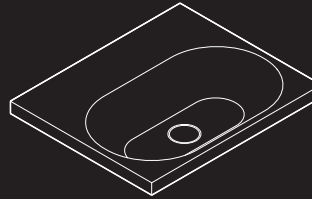


# KALDEWEI

## CONO



## CENTRO



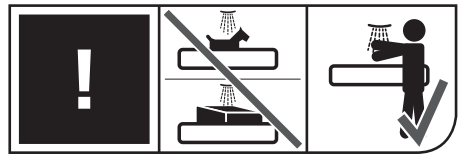
# 2

### DE Montageanleitung | EN Installation instructions

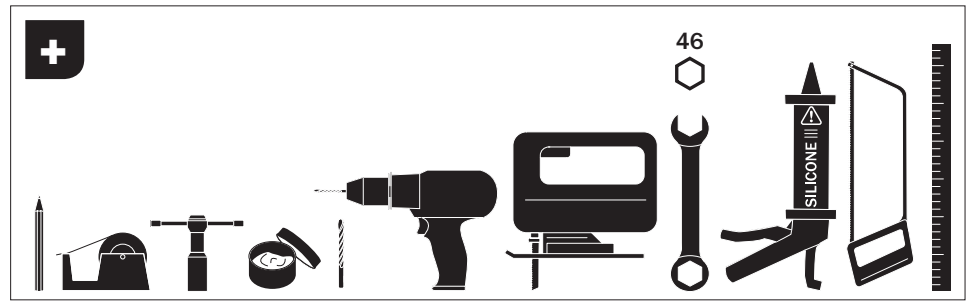
NL Montagehandleiding | FR Instructions de montage | IT Istruzioni di montaggio  
ES Instrucciones de montaje | PT Instruções de montagem | DA Monteringsvejledning  
NO Monteringsanvisning | SV Monteringsanvisning | FI Asennusohje | ET Paigaldusjuhised  
LV Montāžas instrukcija | LT Montavimo instrukcija | PL Instrukcja montażu | CS Návod k montáži  
RU Инструкция по монтажу | UK Інструкція з монтажу | SK Návod na montáž | HU Összeszerelési utasítás | RO Instrucțiuni de montare | SL Navodila za montažo | HR Upute za montažu  
BG Ръководство за монтаж | EL Οδηγίες συναρμολόγησης | TR Montaj talimatı | AR بيكرتلا لي ليد  
ZH 安装说明书 | JA 設置説明書 | KO 조립설명서 | ID Petunjuk perakitan | TH คำแนะนำในการติดตั้ง  
VI Hướng dẫn lắp ráp | HI स्थापना निर्देश

1.

2.



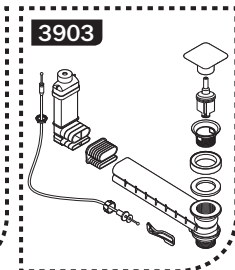
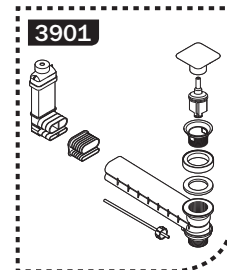
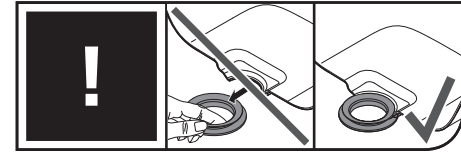
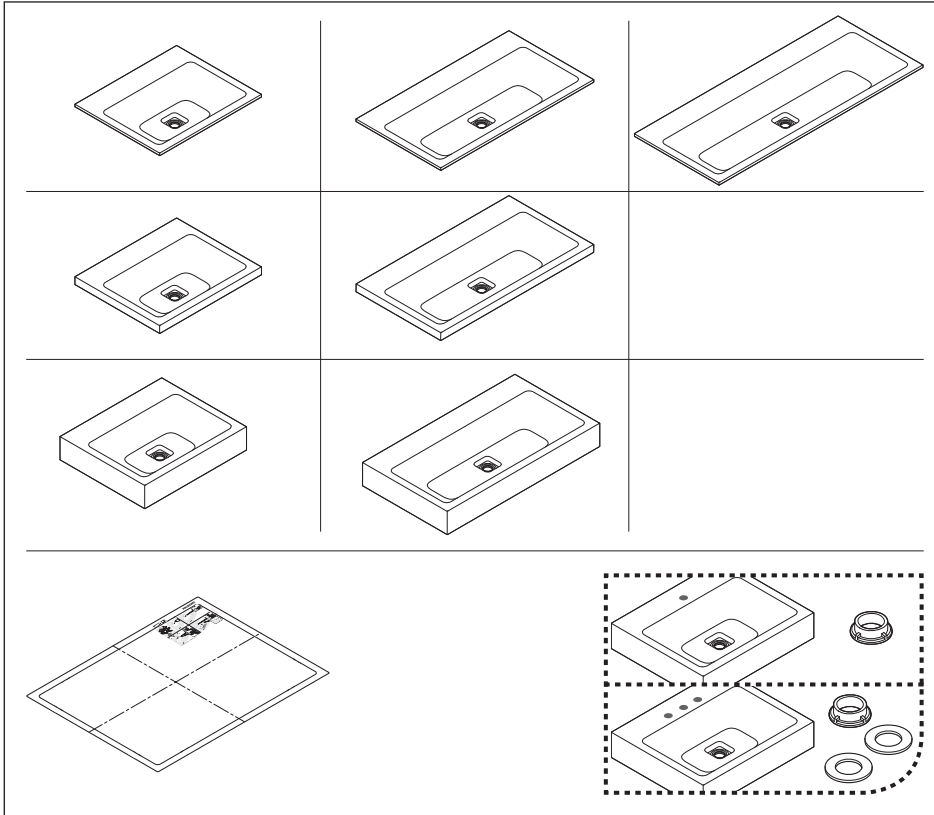
CE 15 KWT 001



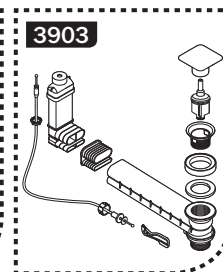
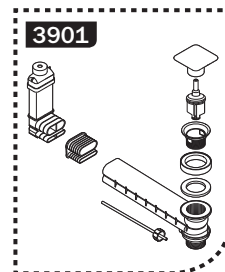
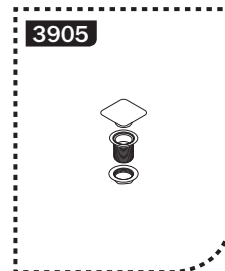
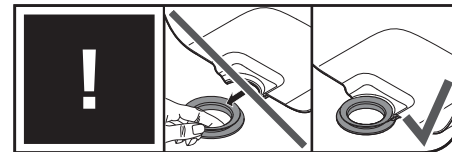
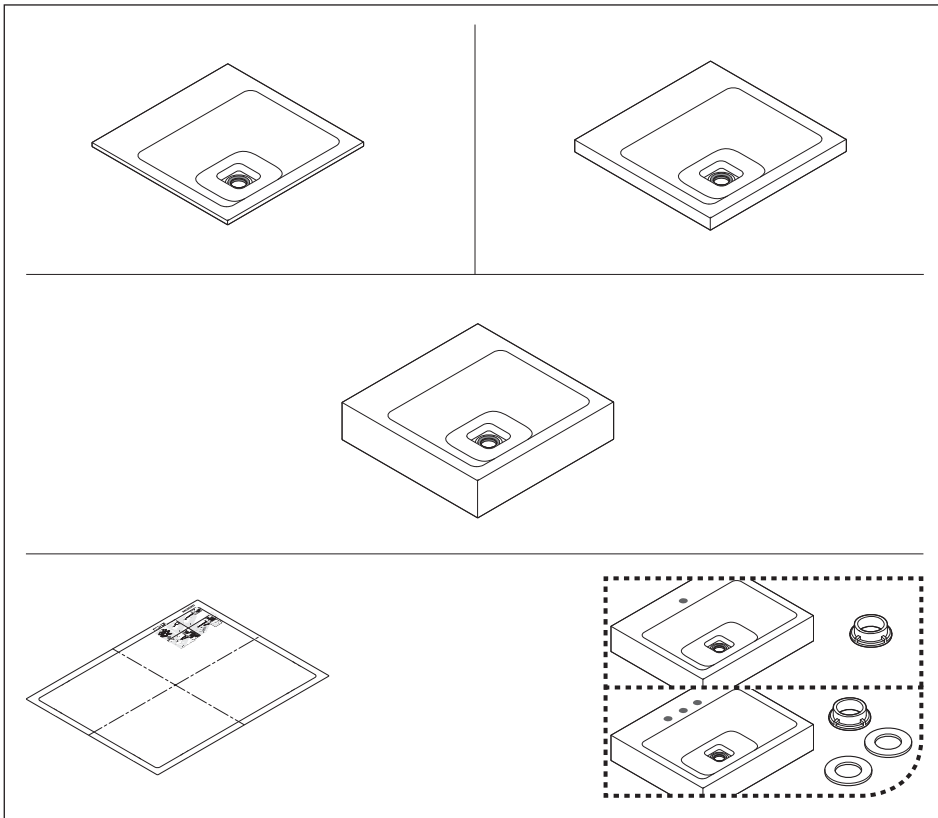
46

Inch = mm x 0,0394

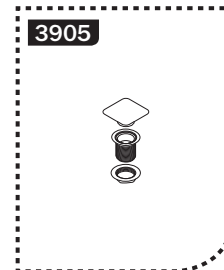
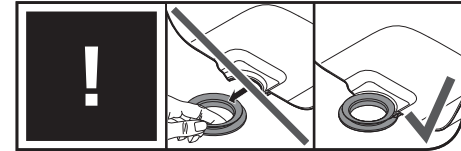
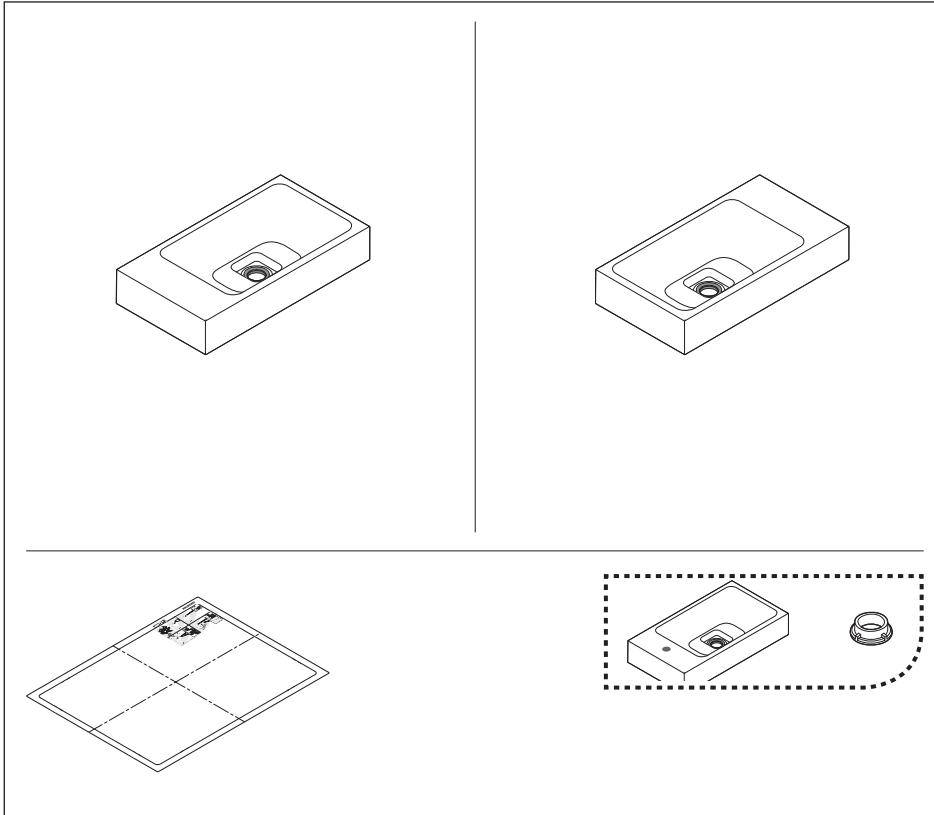
# CONO **A**



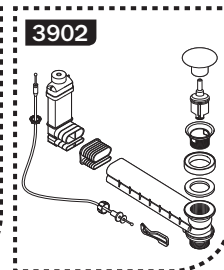
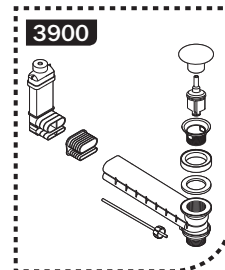
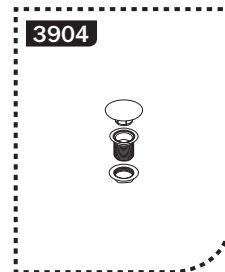
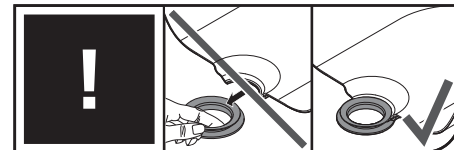
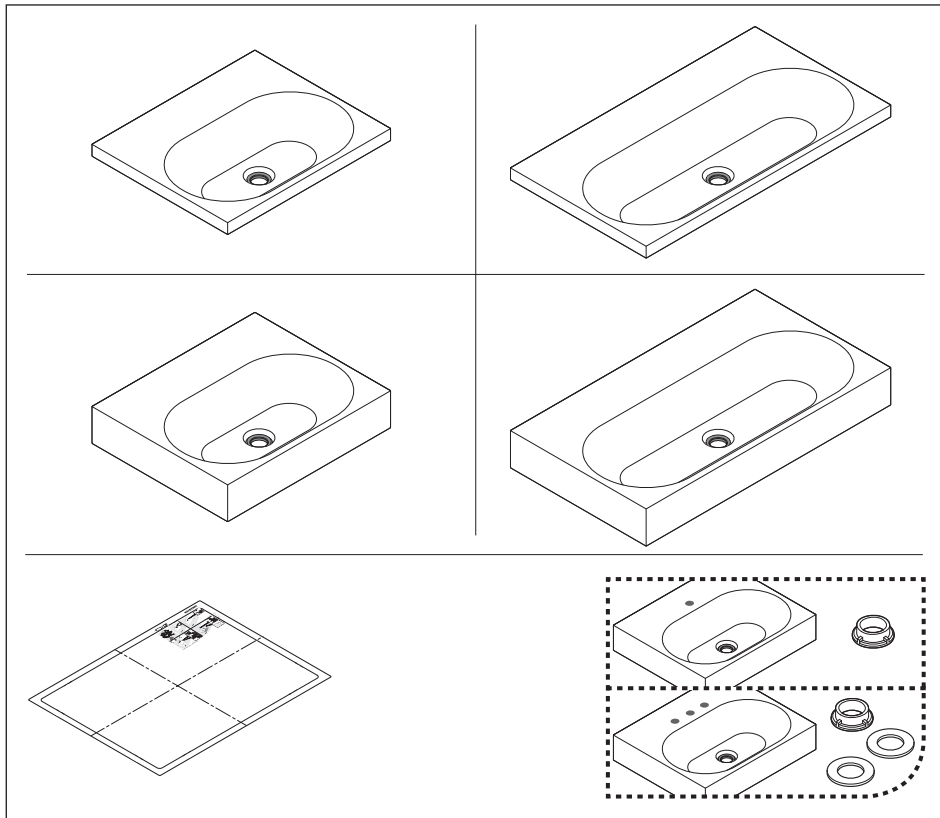
# CONO **A**

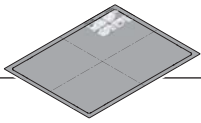


# CONO **B**

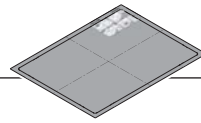
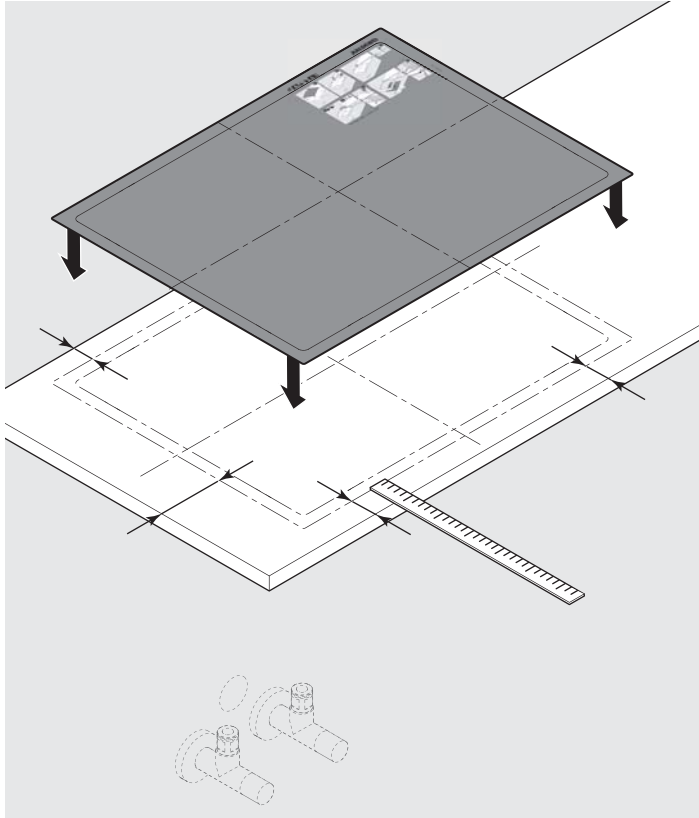


# CENTRO

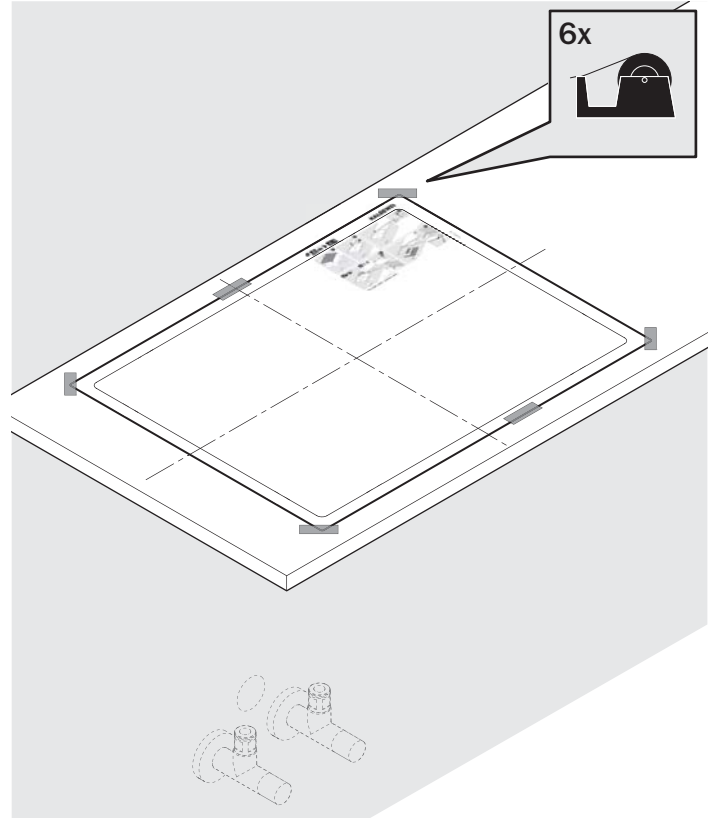


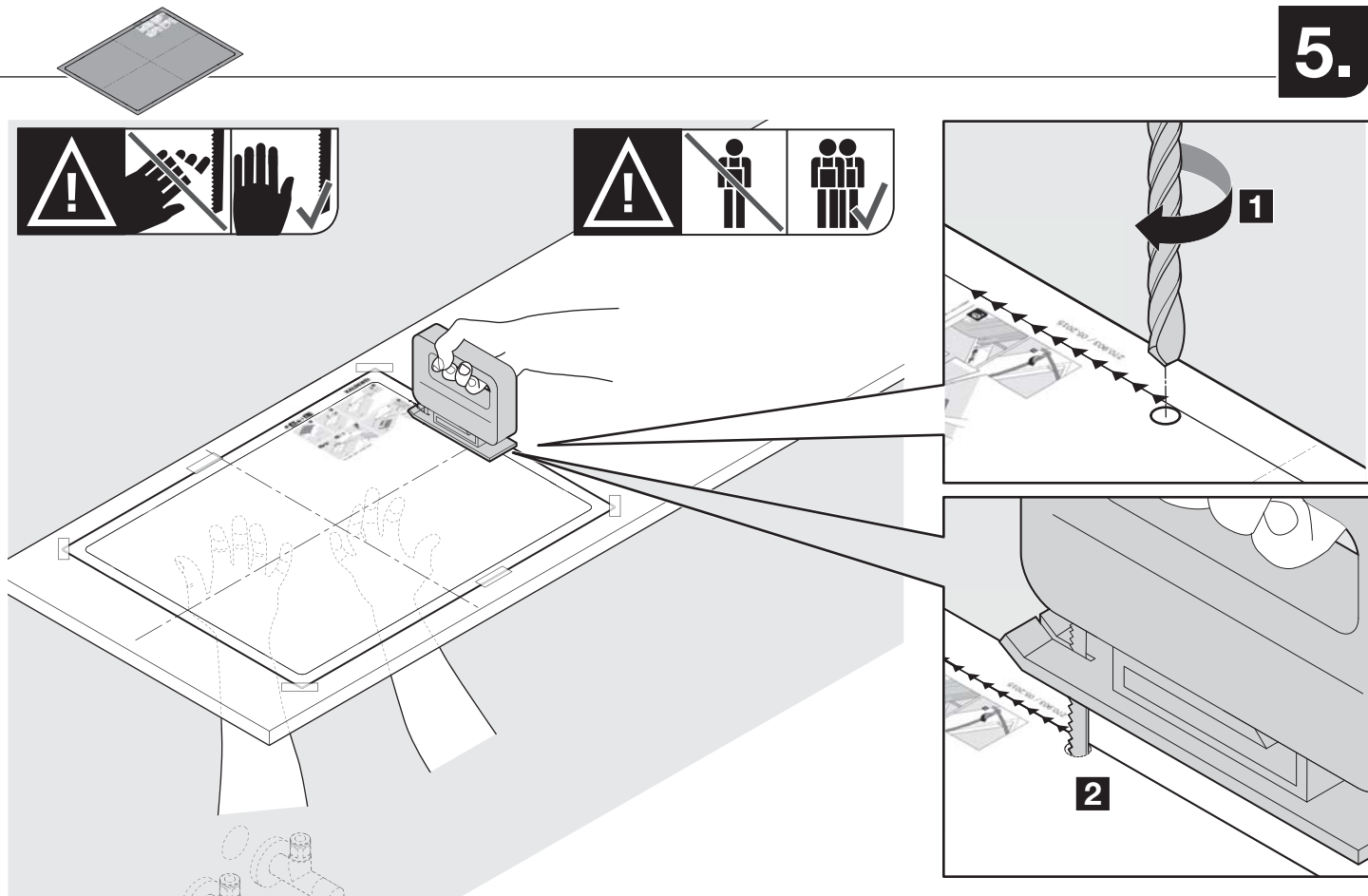


3.

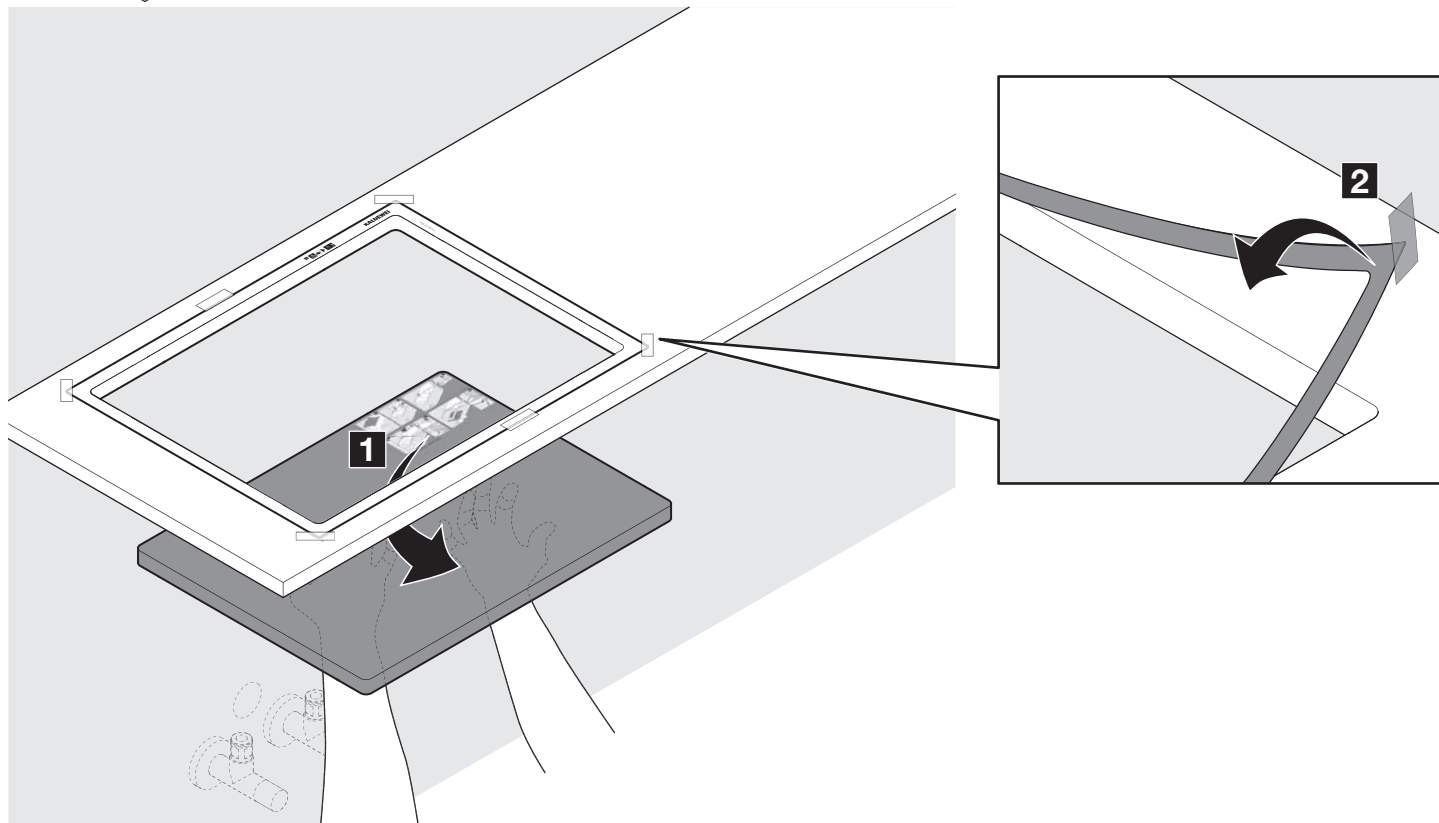


4.

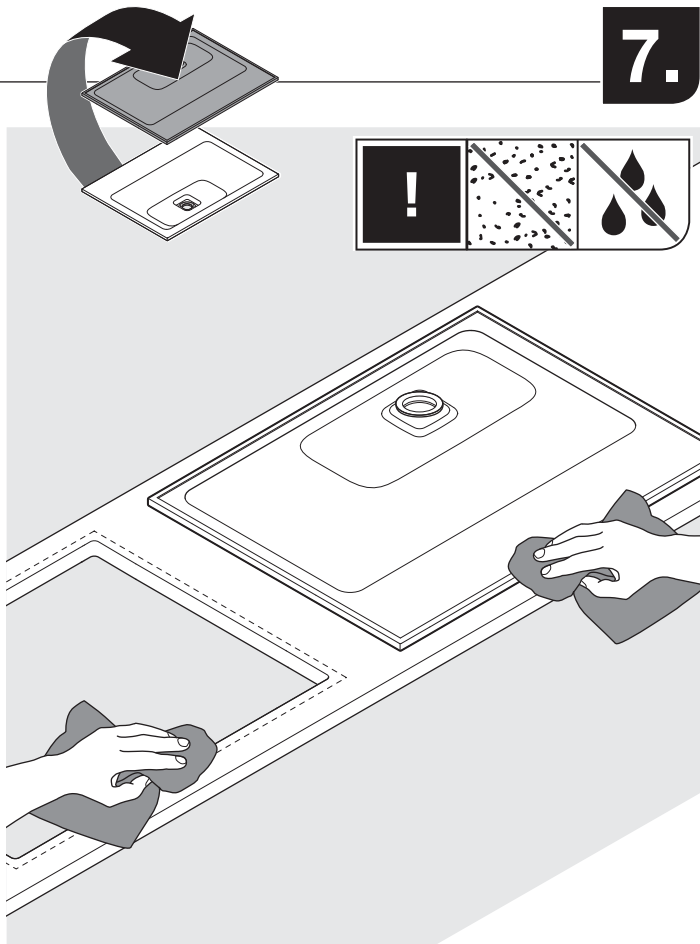




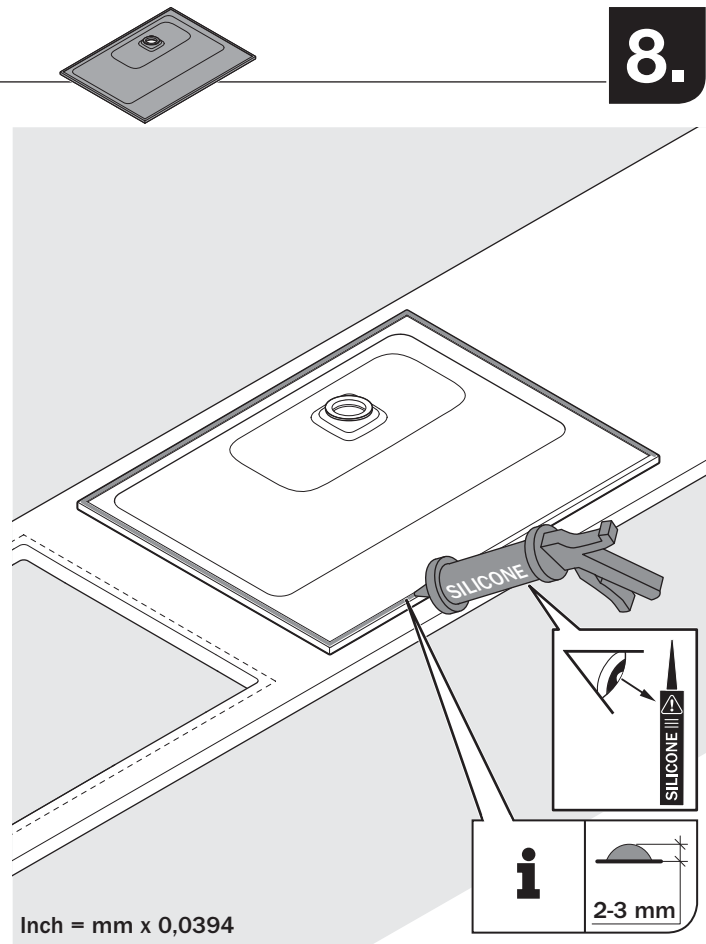




7.

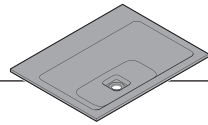
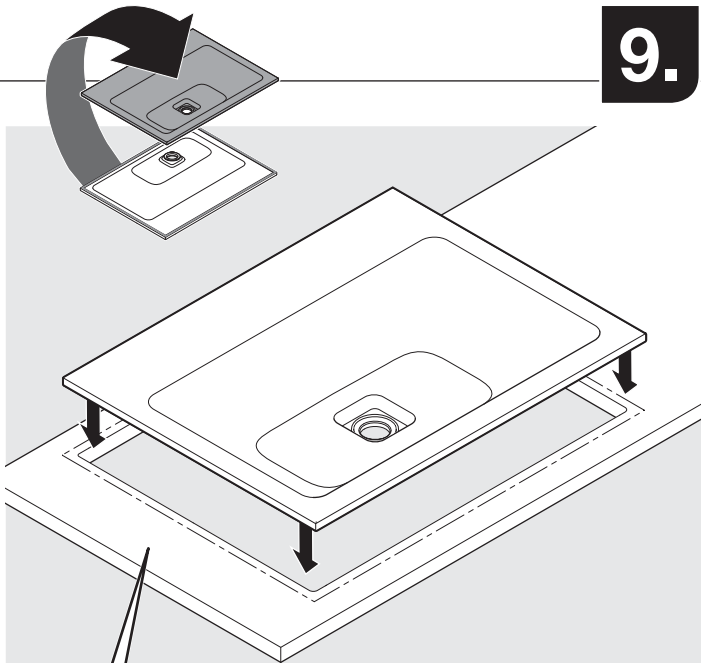


8.

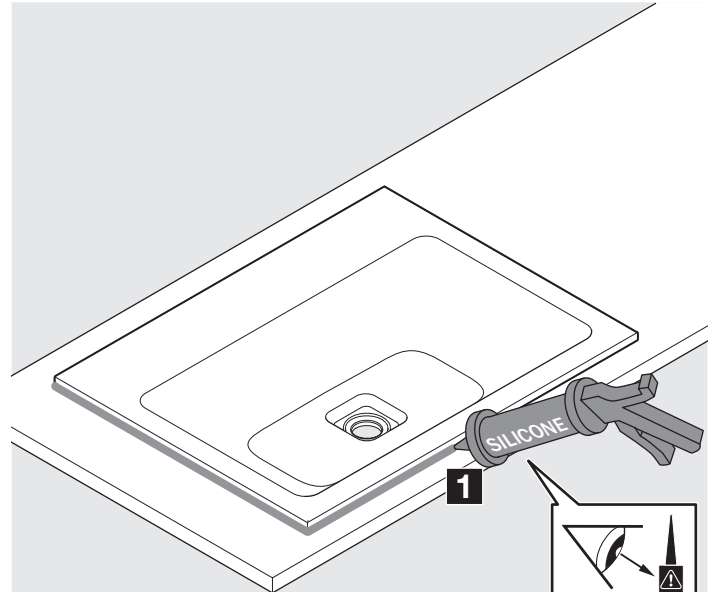


Inch = mm x 0,0394

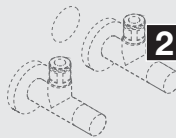
9.



10.



Inch = mm x 0,0394



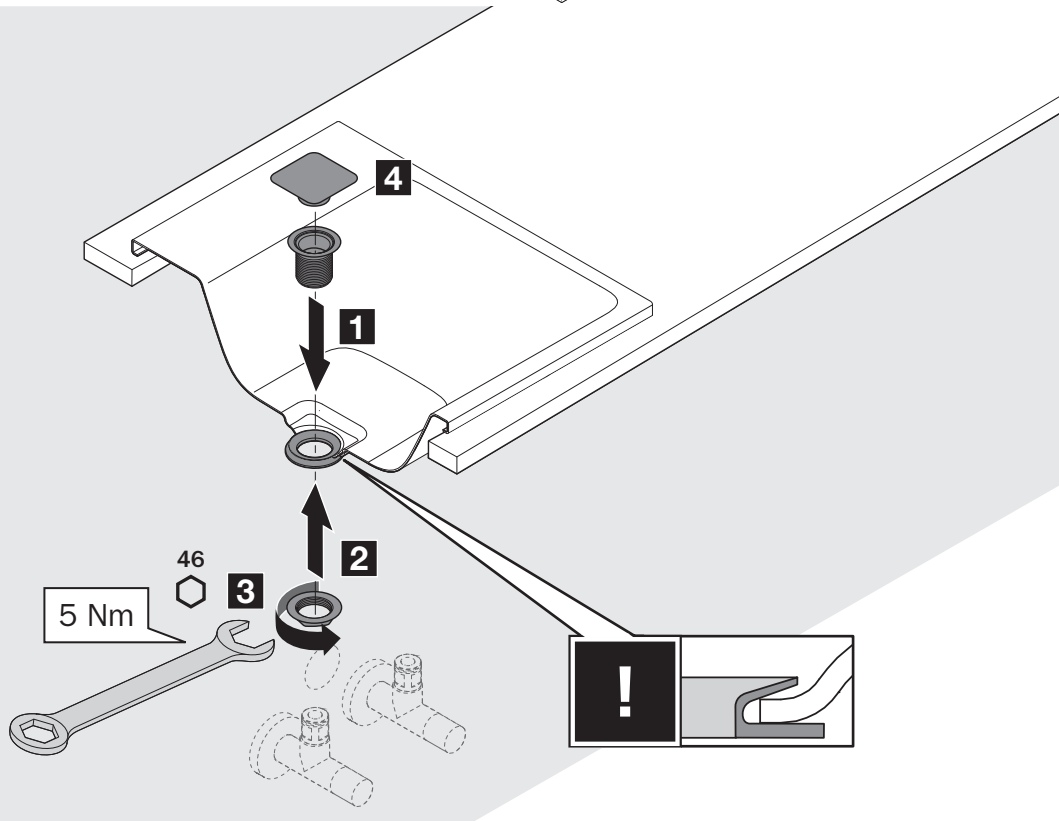
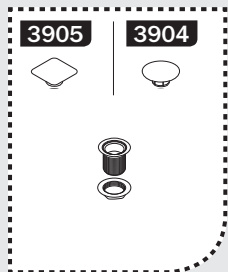
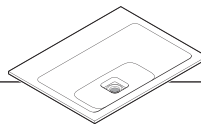
# CONO

A

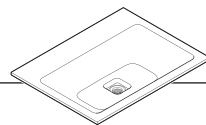
B

# CENTRO

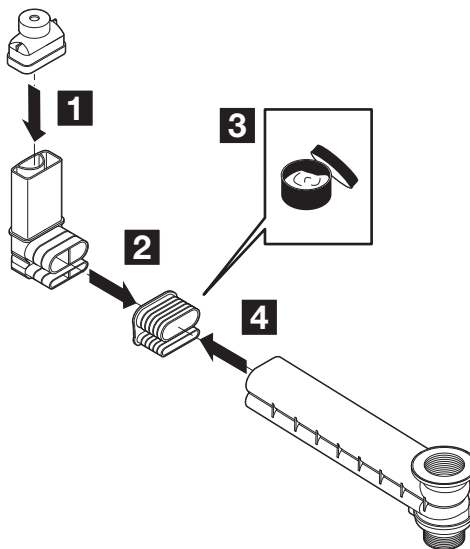
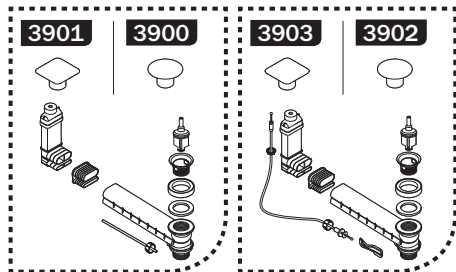
a 11.



# CONO A CENTRO



b c 11.



# CONO

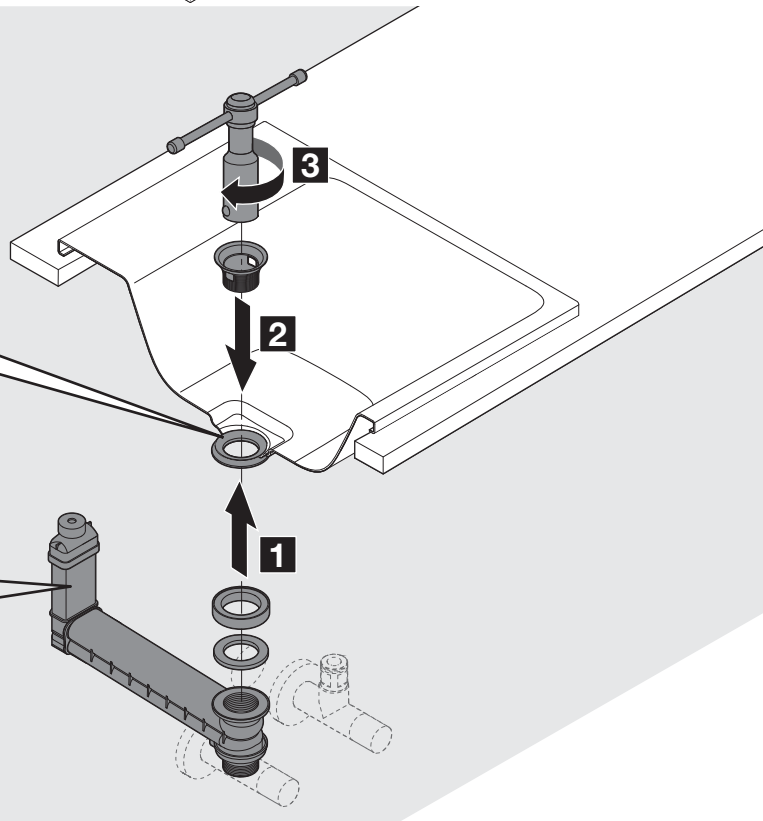
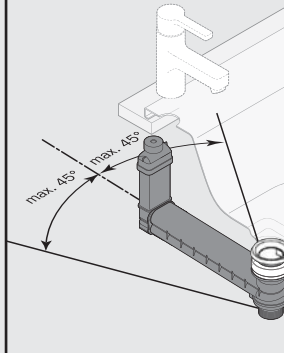
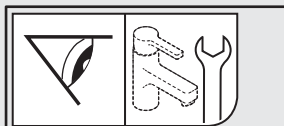
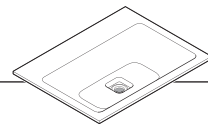
# A

# CENTRO

# b

# c

# 12.



# CONO

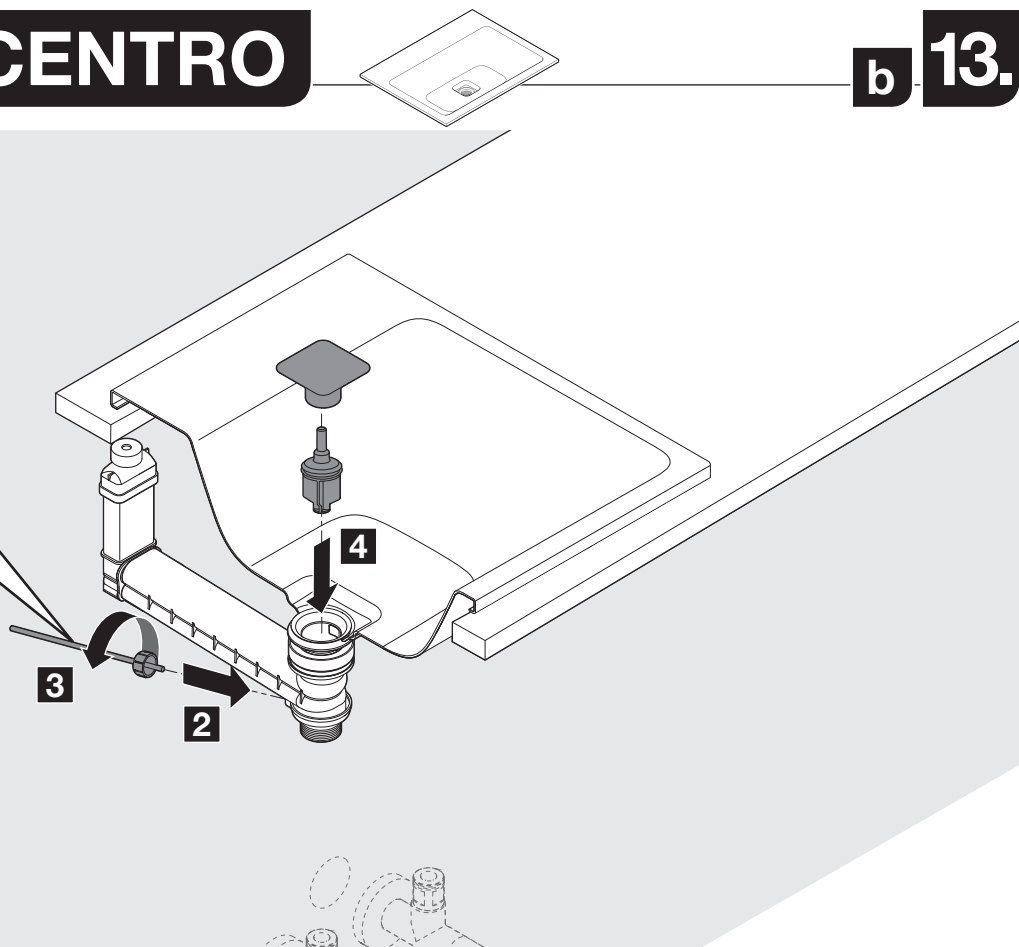
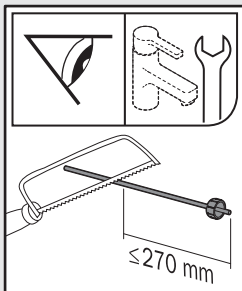
## A

# CENTRO

## b

# 13.

### 1

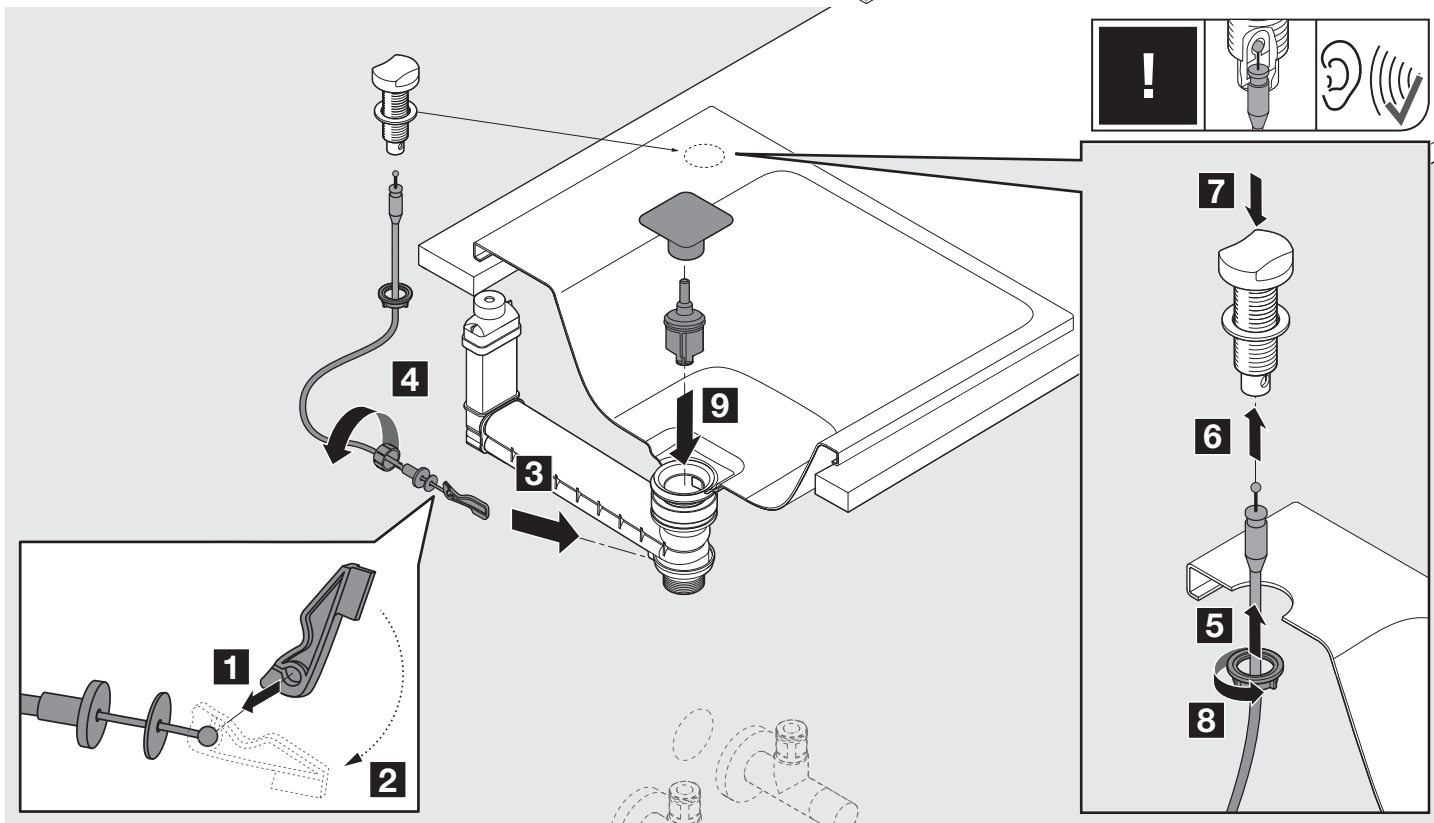


# CONO

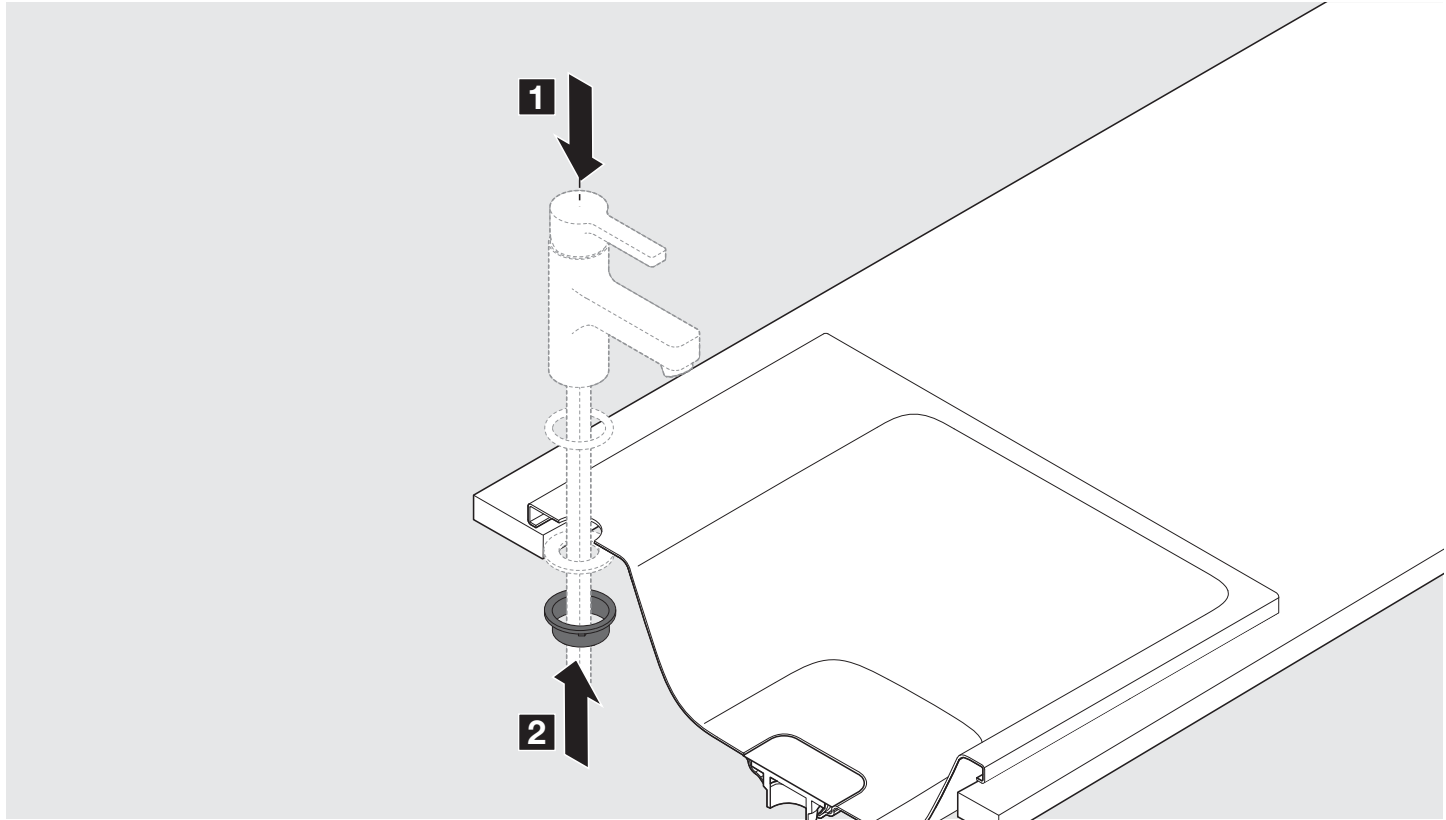
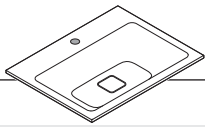
# A

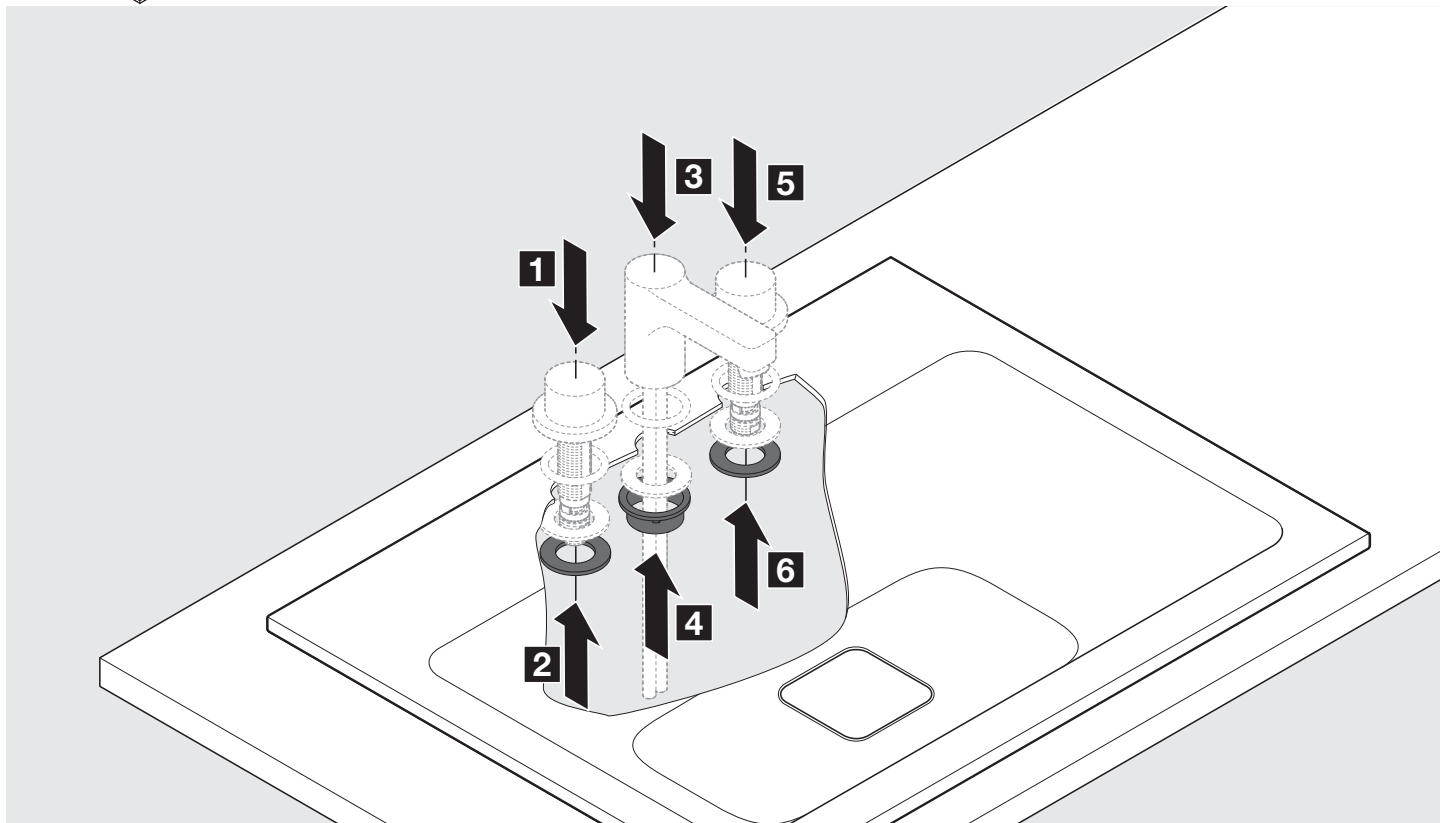
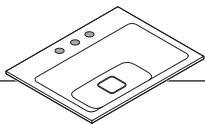
# CENTRO

# c 13.












# KALDEWEI



Franz Kaldewei GmbH & Co. KG  
Beckumer Str. 33-35

D-59229 Ahlen

 +49 2382 785 0

 +49 2382 785 200

[www.kaldewei.com](http://www.kaldewei.com)

